




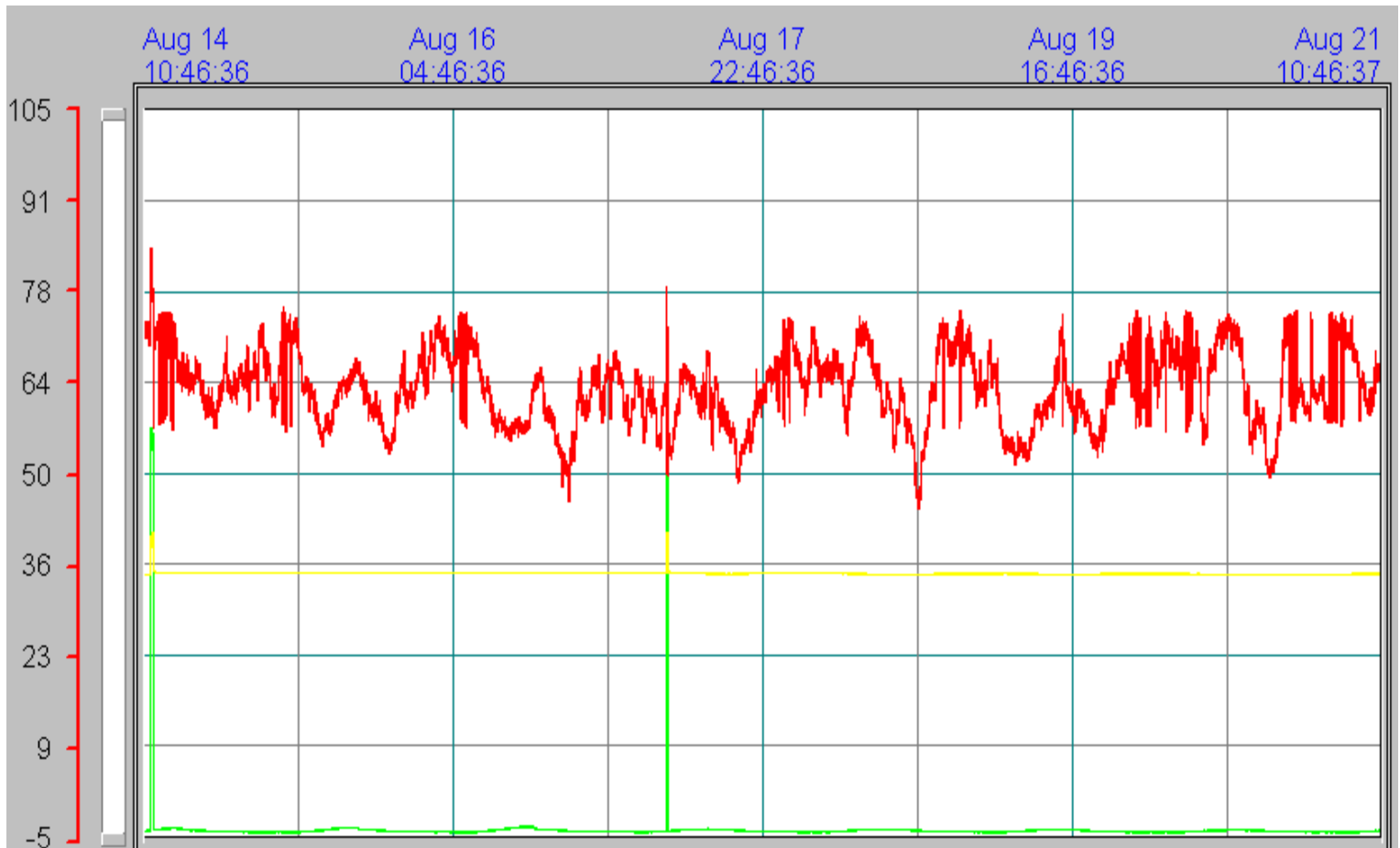
WELL #2: Built in 1994

COMMENTS: None

**Legend**

-  Water pressure at the well site
-  Shows the amount of water flowing from the well. When the line goes up more water is flowing through the system. The flow is determined by the amount of pressure in the well
-  Water level, goes down when pump is flowing water, which is the draw down. Goes back up when pump kicks off




Report completed by: Patrick Goyet



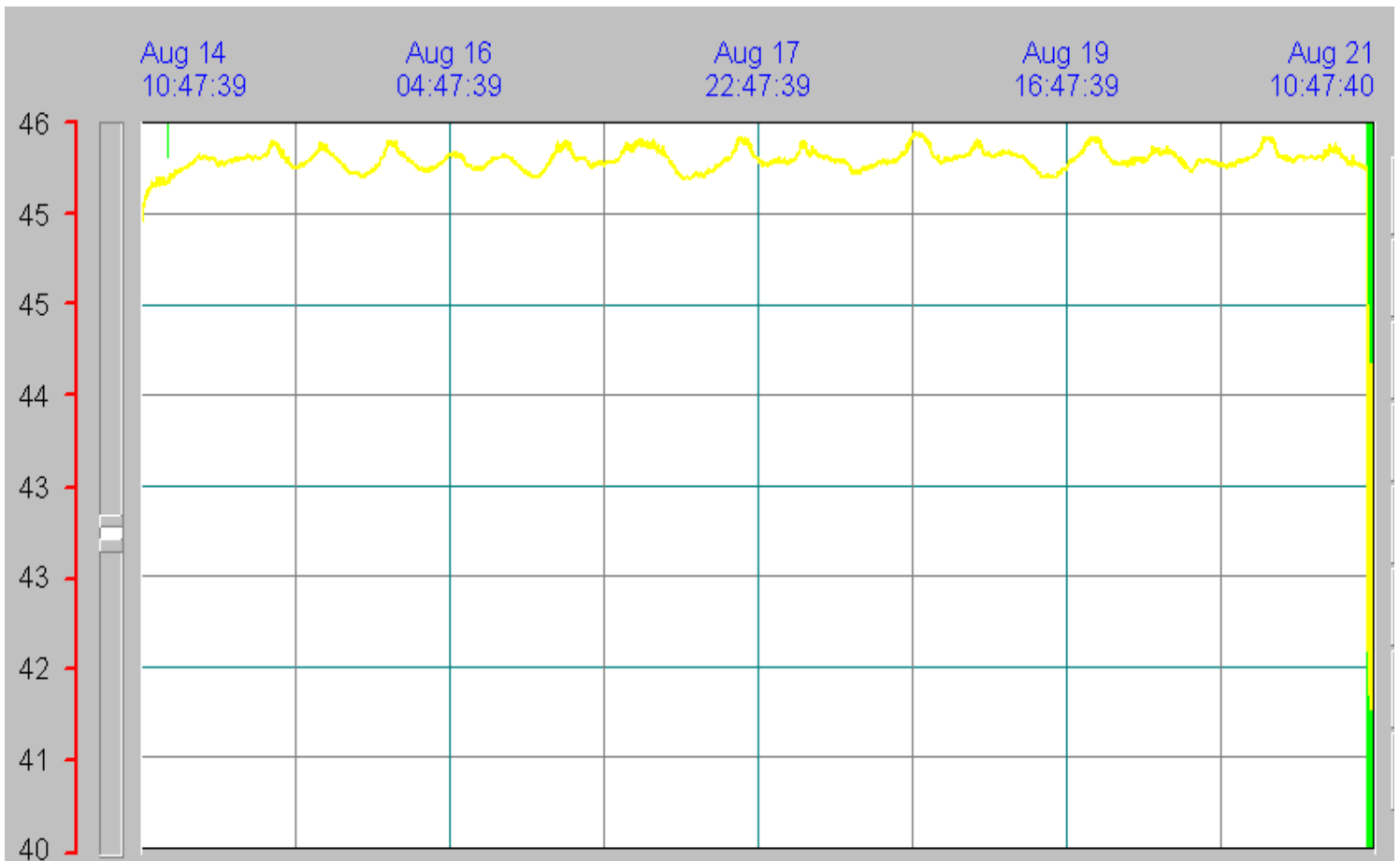
WELL #4: Built in 1956

COMMENTS: None

**Legend**

-  Water pressure at the well site
-  Shows the amount of water flowing from the well. When the line goes up more water is flowing through the system. The flow is determined by the amount of pressure in the well
-  Water level, goes down when pump is flowing water, which is the draw down. Goes back up when pump kicks off.

Report completed by: Patrick Goyet



WELL #6: Built in 1965

COMMENTS: None

### Legend



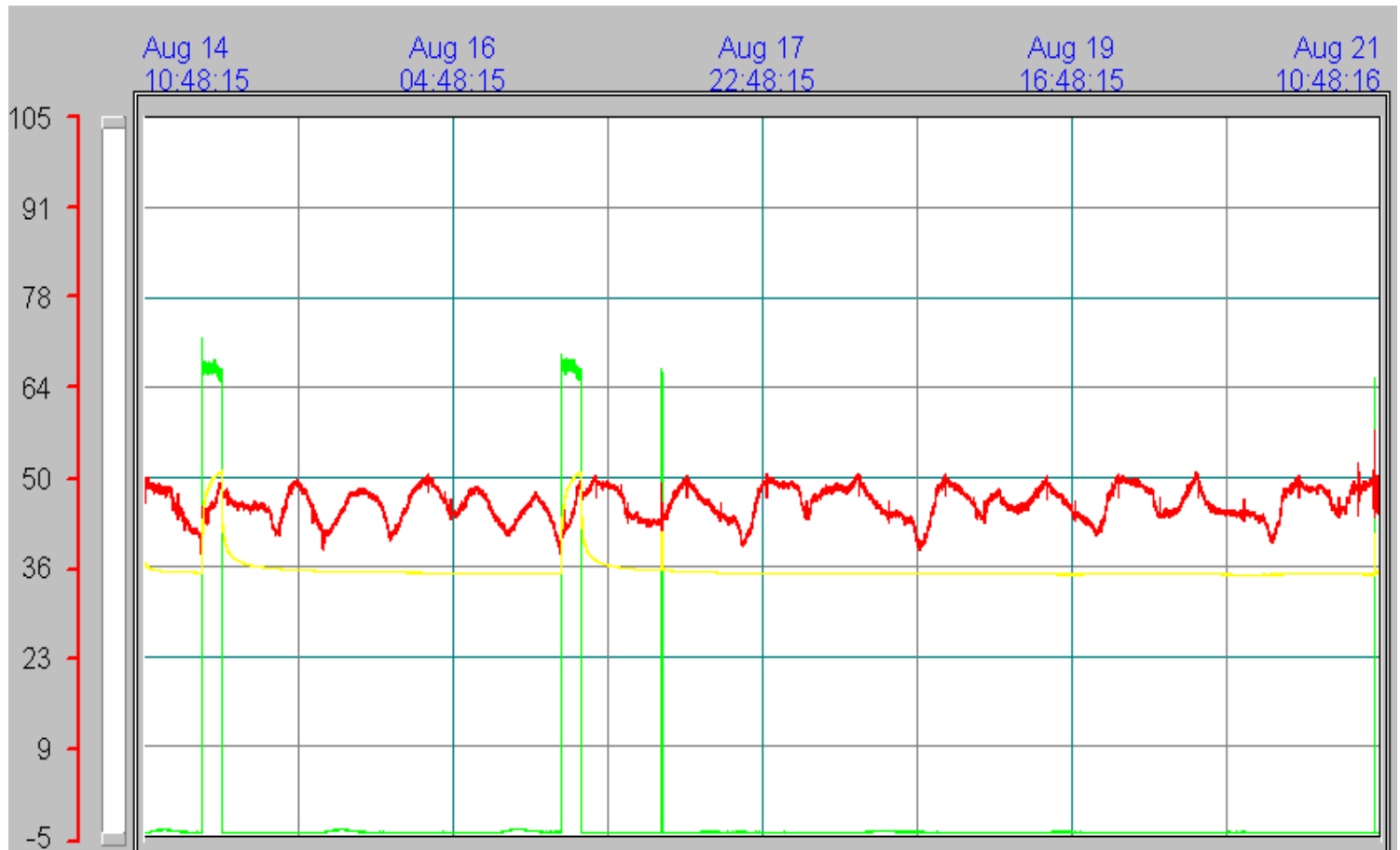
Water pressure at the well site



Shows the amount of water flowing from the well. When the line goes up more water is flowing through the system. The flow is determined by the amount of pressure in the well






Water level, goes down when pump is flowing water, which is the draw down. Goes back up when pump kicks off.



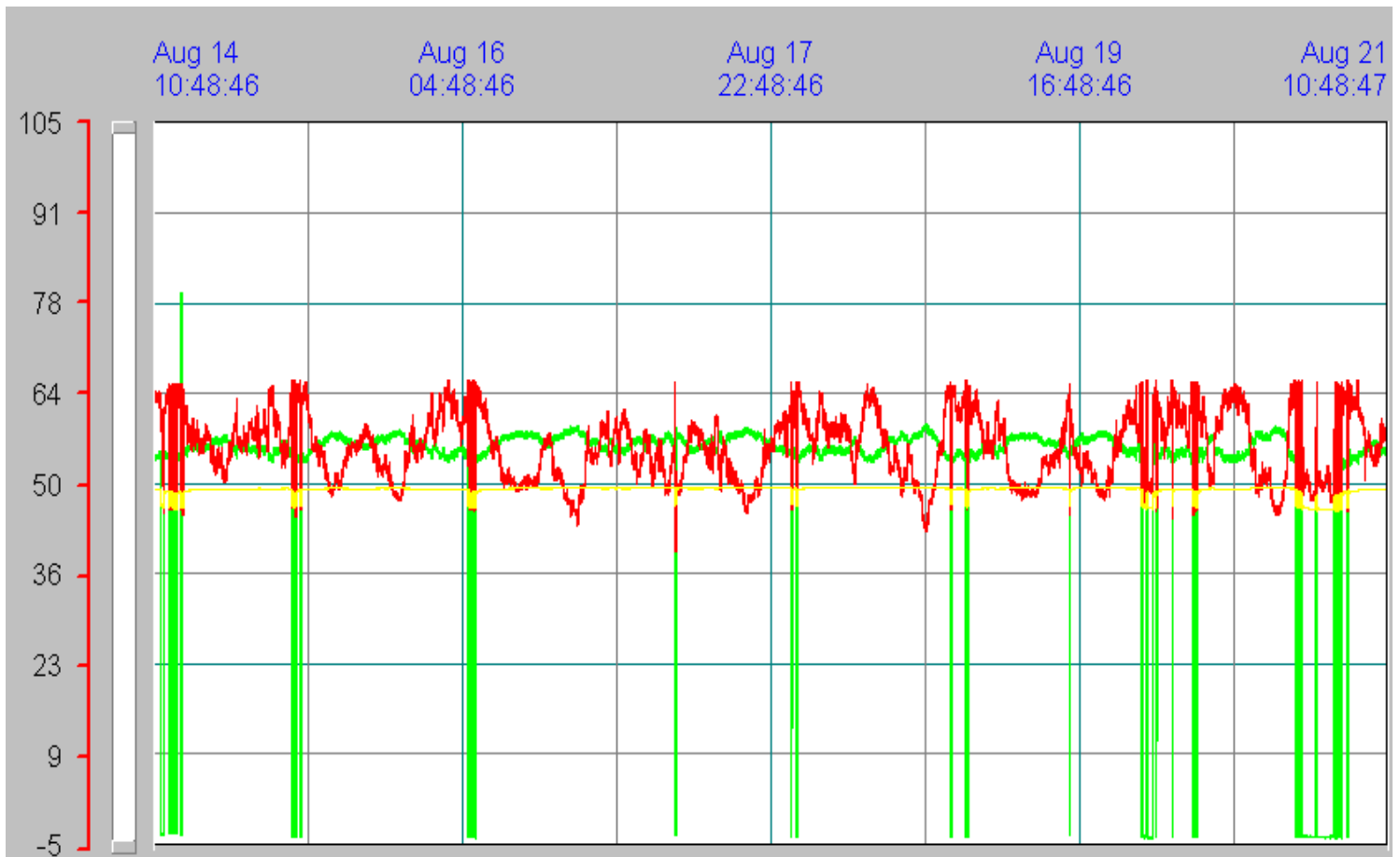
WELL #7: Built in 1974

COMMENTS: None

**Legend**

-  Water pressure at the well site
-  Shows the amount of water flowing from the well. When the line goes up more water is flowing through the system. The flow is determined by the amount of pressure in the well
-  Water level, goes down when pump is flowing water, which is the draw down. Goes back up when pump kicks off.




Report completed by: Patrick Goyet



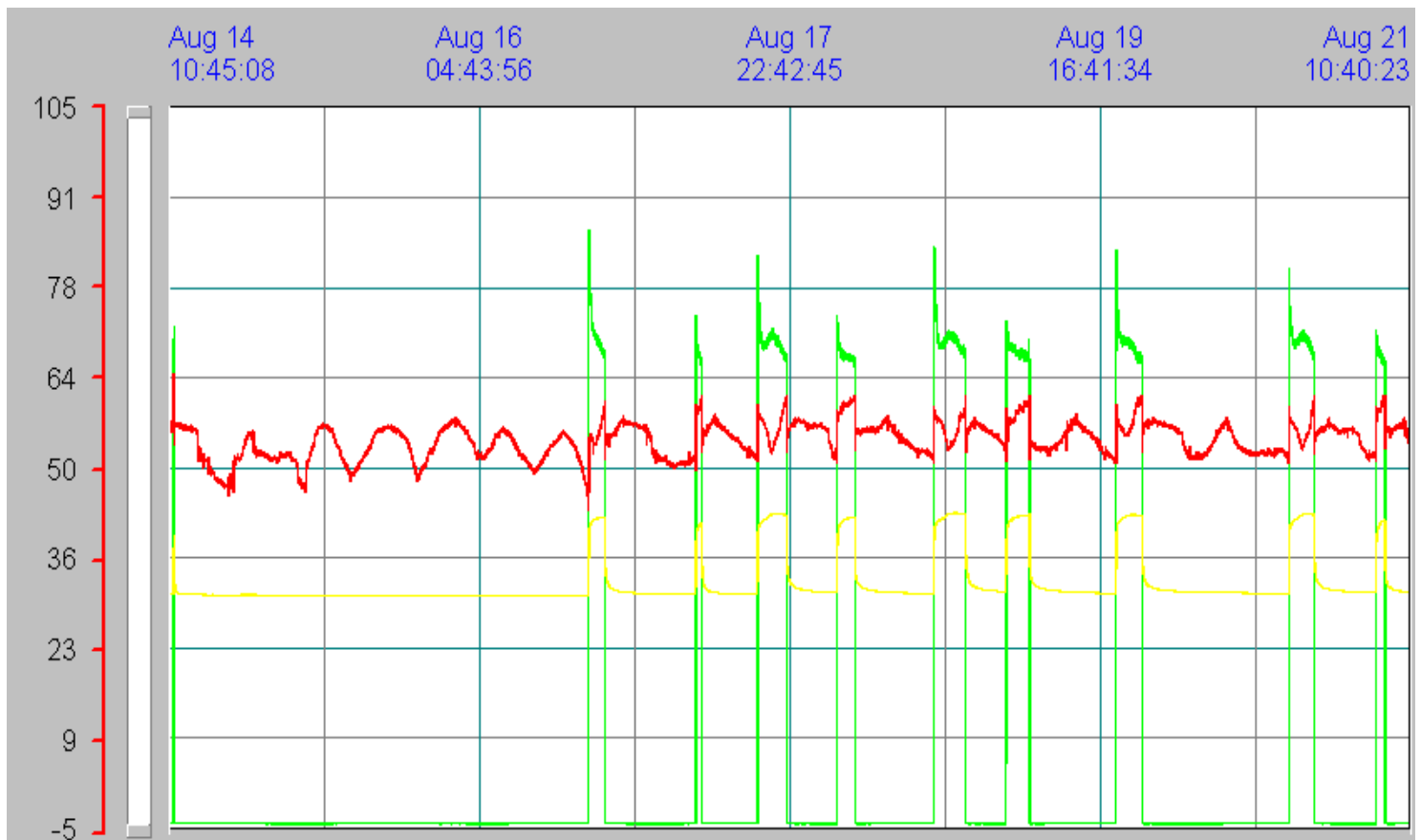
WELL #8: Built in 1987

COMMENTS: None

**Legend**

-  Water pressure at the well site
-  Shows the amount of water flowing from the well. When the line goes up more water is flowing through the system. The flow is determined by the amount of pressure in the well
-  Water level, goes down when pump is flowing water, which is the draw down. Goes back up when pump kicks off.


Report completed by: Patrick Goyet





WELL #9: Built in 1978

COMMENTS: None

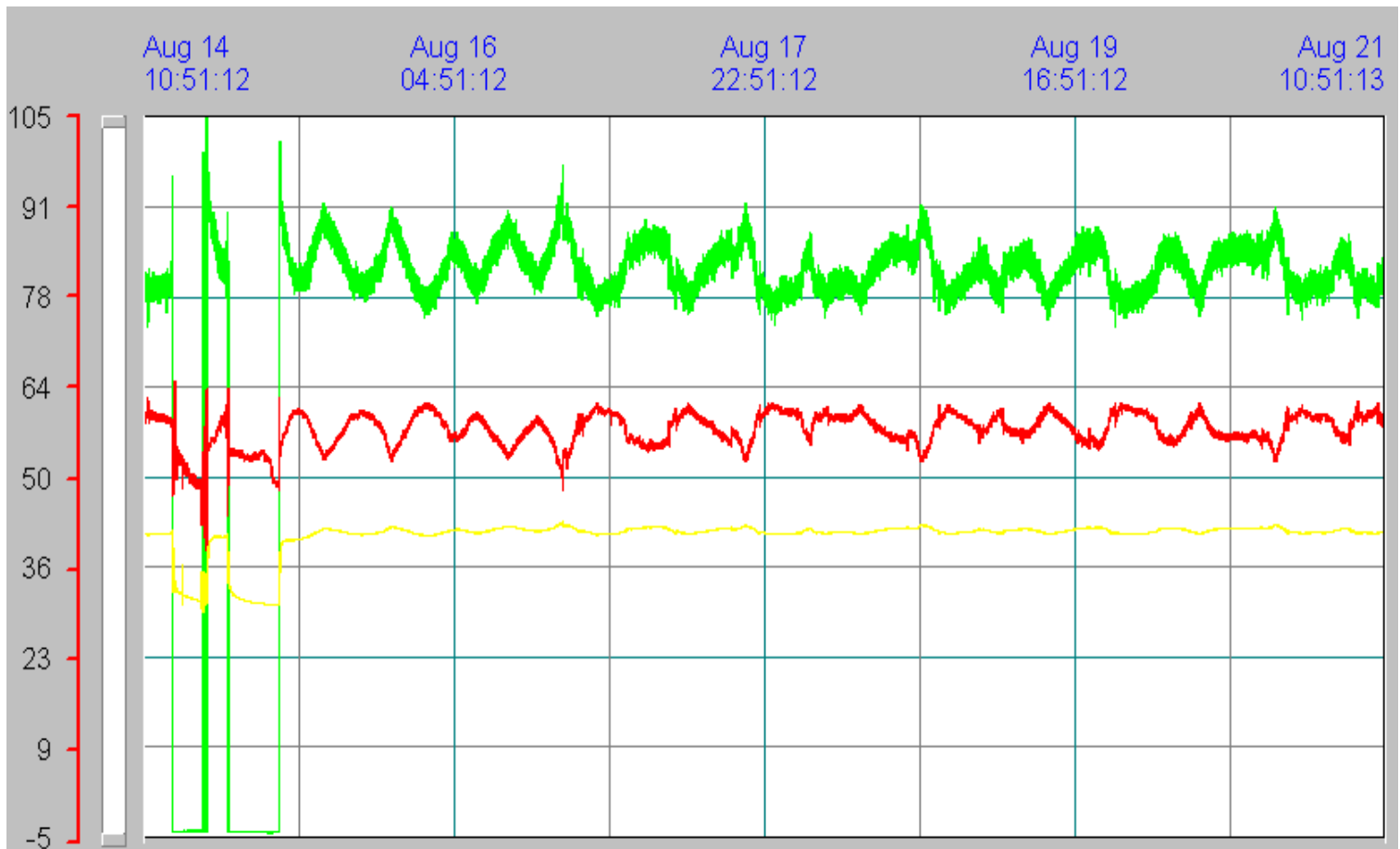
**Legend**

 Water pressure at the well site

 Shows the amount of water flowing from the well. When the line goes up moew water is flowing though the system. The flow is determined by the amount of pressure in the well

 Water level, goes down when pump is flowing water, which is the draw down. Goes back up when pump kicks off.




Report completed by: Patrick Goyet



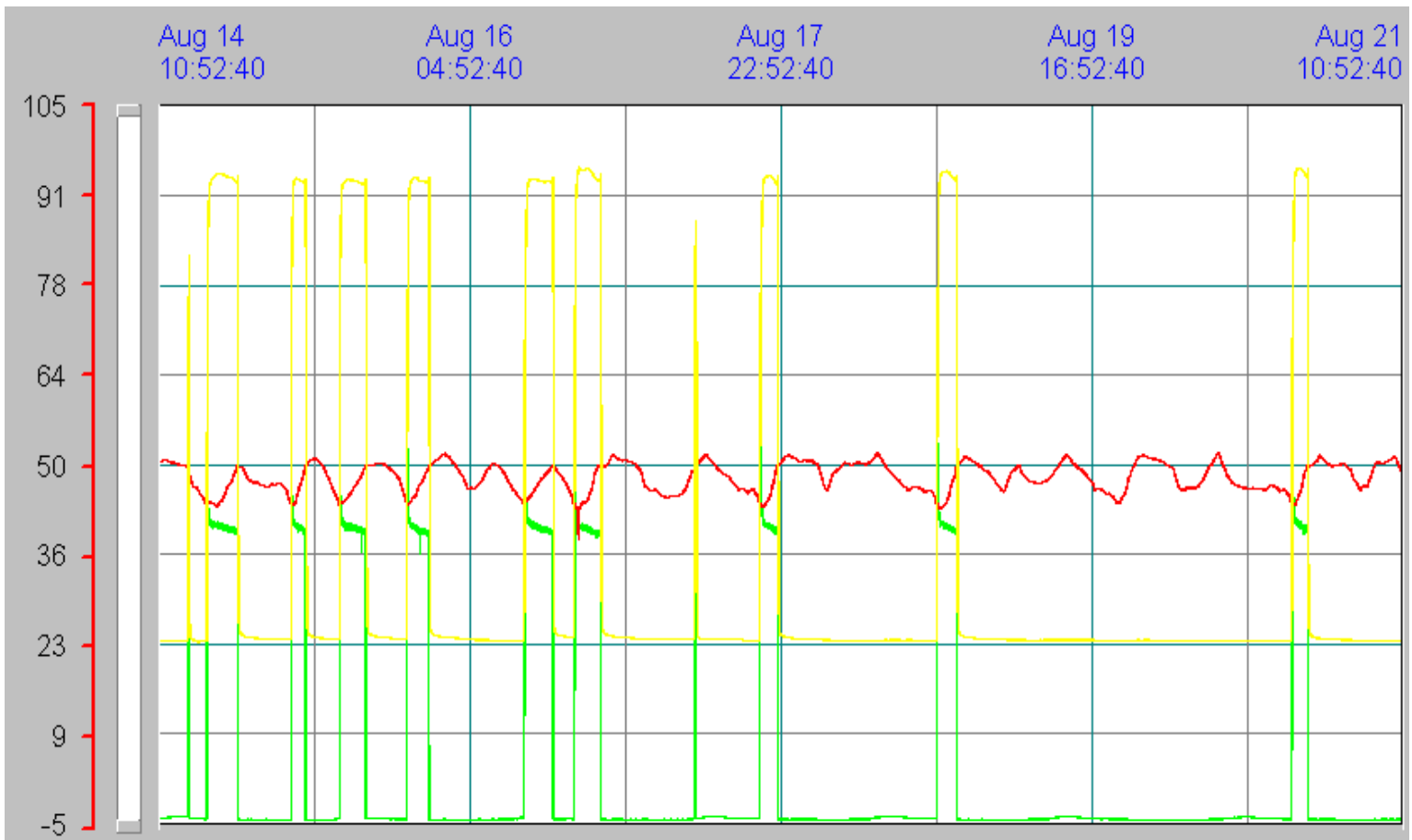
WELL #10: Built in 1979

COMMENTS: None

**Legend**

-  Water pressure at the well site
-  Shows the amount of water flowing from the well. When the line goes up more water is flowing through the system. The flow is determined by the amount of pressure in the well
-  Water level, goes down when pump is flowing water, which is the draw down. Goes back up when pump kicks off.




Report completed by: Patrick Goyet



WELL #12: Built in 1987

COMMENTS: None

**Legend**

-  Water pressure at the well site
-  Shows the amount of water flowing from the well. When the line goes up moew water is flowing though the system. The flow is determined by the amount of pressure in the well
-  Water level, goes down when pump is flowing water, which is the draw down. Goes back up when pump kicks off.